

Bi-fold 180™

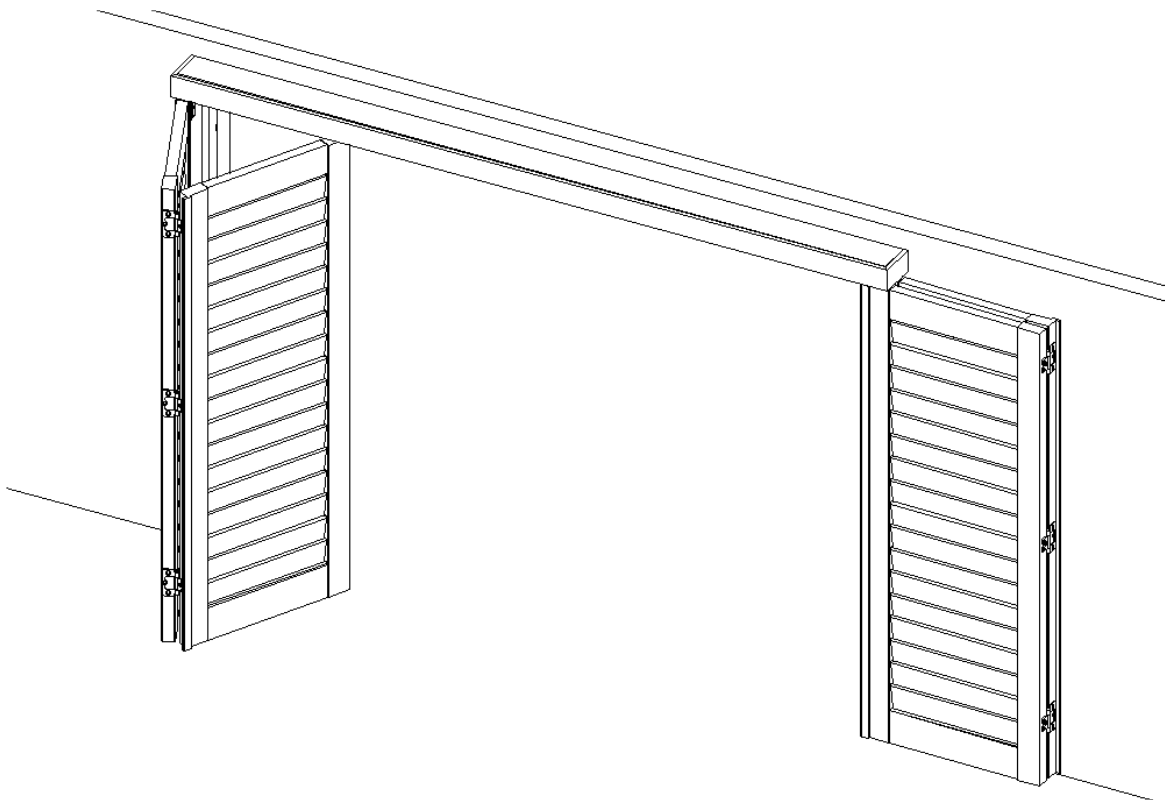
Guidelines and Specs:

<u>Description</u>	<u>Minimum</u>	<u>Maximum</u>		
		1 ¼"	1 ⅞"	2½" ; 3½" ; 4½"
Single-Panel Width (Bi-fold Track)	6"	N/A	24"	24"
Single-Panel Width (LLL/RRR)	N/A	N/A	N/A	N/A
Single-Panel Height	10"	N/A	133"	133"

Outside Mount

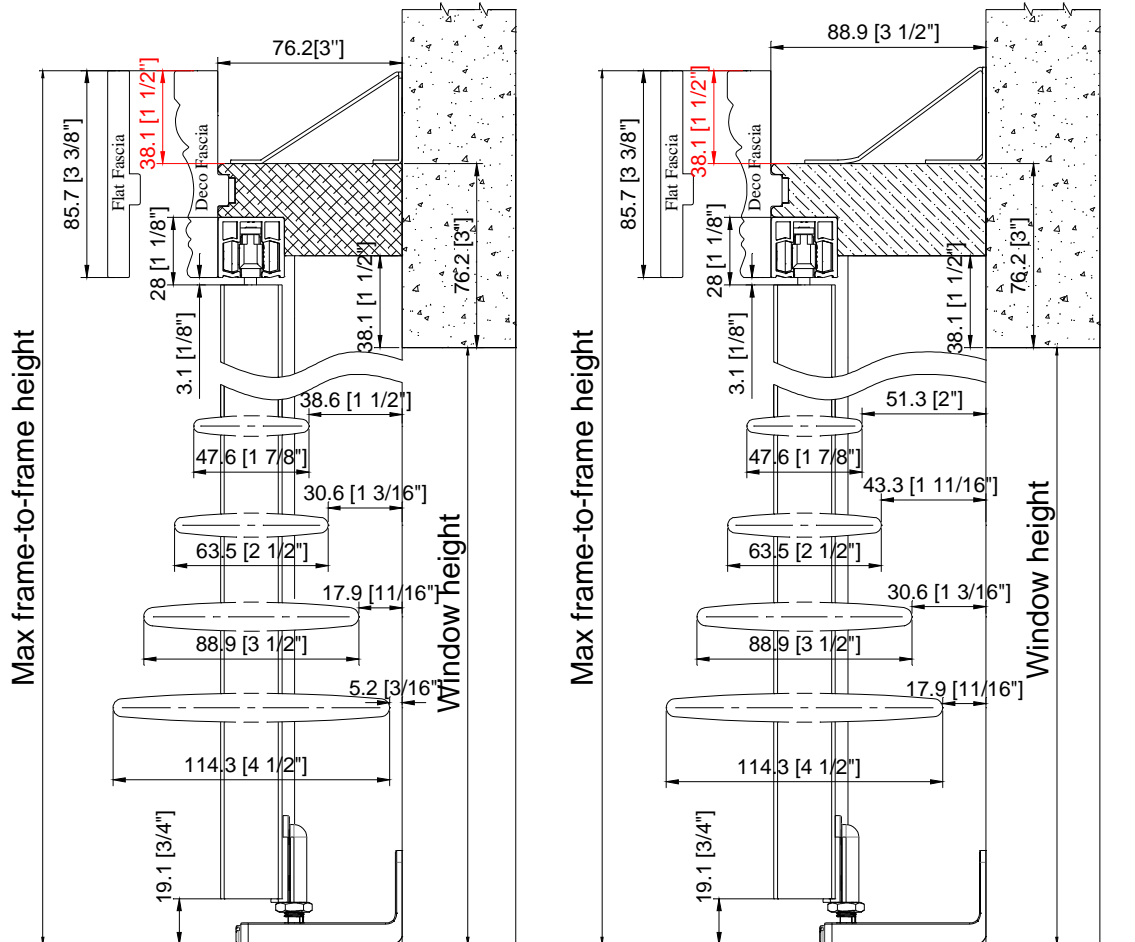
Max frame-to-frame width: window width + 3 1/2"

Max frame-to-frame height: window height + 4 1/2"

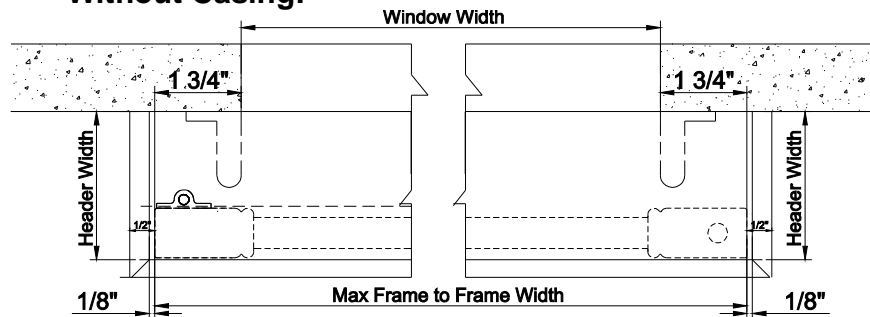


- Track is pre-installed on the header; standard 1 track only.

Mounting Options: Outside Mount only Side View



Top View Without Casing:



Note:

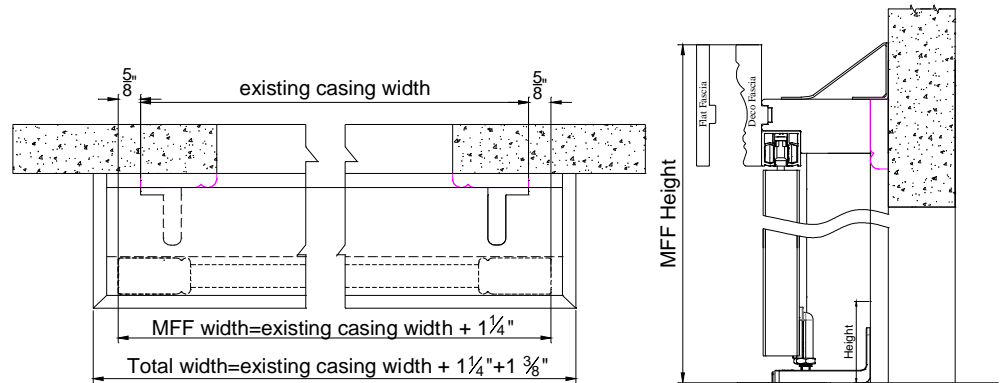
◇ Fascia return will protrude the panel about 1/2" for each side.

◇ The header will protrude the panel about 1/8" for each side.

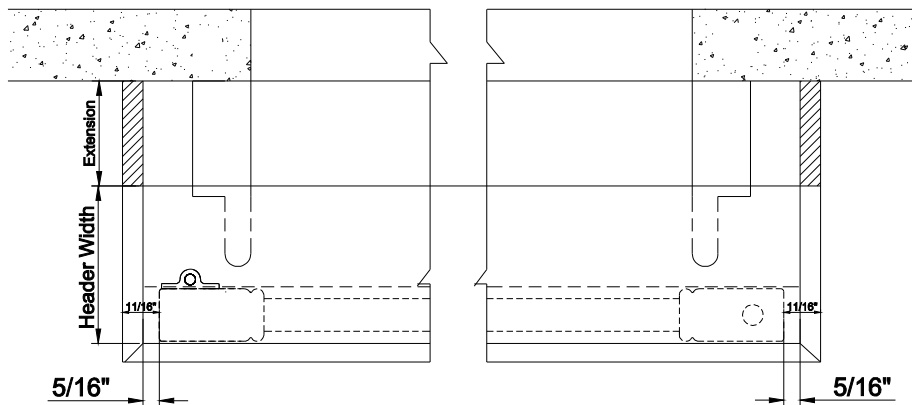
◇ Header, light blocks, and bottom pivot bracket(s) must be installed on a flat surface.

Woodlore® Shutters

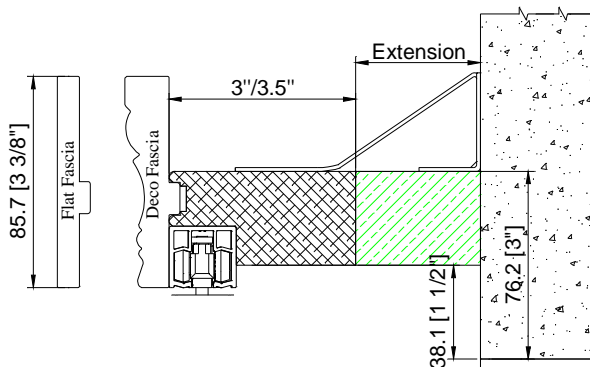
With Existing Casing:



- ✧ Header Extension: Optional
- ✧ Custom extension up to 2" for Header
- ✧ When extension is needed, the header will protrude the panel 5/16" for each side and the fascia return will protrude the panel 11/16" for each side.

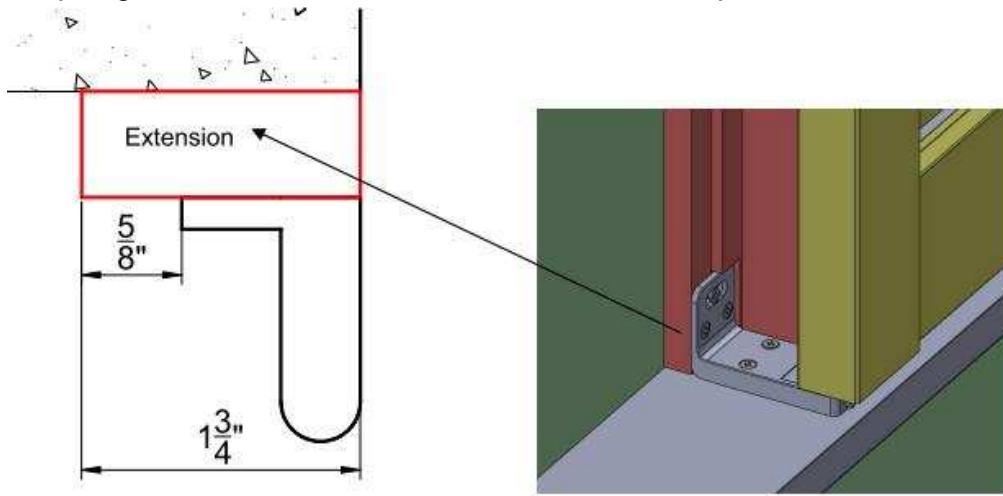


- ✧ The extension will be pre-attached.

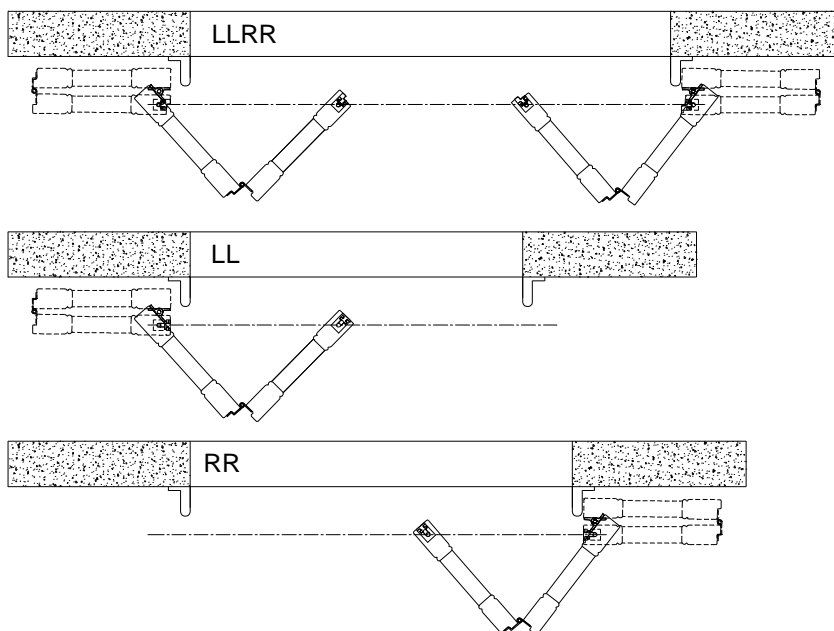


Woodlore® Shutters

For 180 Bi-fold, if Bottom Pivot L Bracket is required, the extension for the L shape light block will be $1\frac{3}{4}$ " in width. Please see picture below:



Panel Configuration : Only 2", 2 1/4" rabbet and butt stiles are available. Center stile is not available.



Notes:

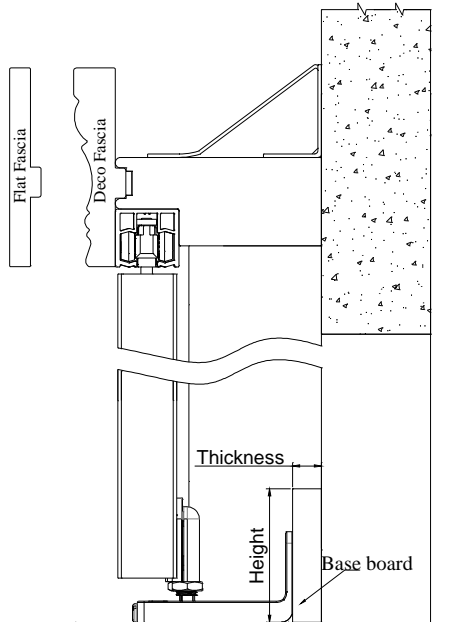
If there is no baseboard to the wall, 3" header can be used.

If there is baseboard to the wall, then it should be as below:

1. If base board thickness is less or equal to $\frac{5}{8}$ ", 3 $\frac{1}{2}$ " header can be used.
2. If base board thickness is over $\frac{5}{8}$ ", it is suggest using the 3" header with build out. And the build out thickness=base board thickness- $\frac{1}{8}$ ".

Woodlore® Shutters

Please see the drawing below:



180° Bi-fold Track Shutters Framing Materials

Type	Header Dimension	Top Fascia Dimension	L Shape Light Block Strip Dimension
Header & Top Fascia & Light Block Strip	3"	3 3/8"	1 9/16"
	3 1/2"		2 1/16"

180° Bi-fold Track Shutters Hardware Box

Parts
Wrench
Hinge Pin
Support L Bracket (based on the length of header)
2 ½ " screws for support L bracket
¾ " screws for support L bracket
Bottom Pivot Bracket
1 ½ " screws for bottom pivot bracket
2 ½ " screws for Frame with predrilled screw holes

Bi-fold 90

Guidelines and Specs:

<u>Description</u>	<u>Minimum</u>	<u>Maximum</u>		
		1 ¼"	1 7/8"	2 ½" ; 3 ½" ; 4 ½"
Single-Panel Width (Bi-fold Track)	6"	N/A	24"	24"
Single-Panel Width (Multifold track up to 4 panels)	N/A	N/A	N/A	N/A
Single-Panel Height	10"	N/A	133"	133"

Outside Mount

Max frame-to-frame width: window width + 3 1/2"

Max frame-to-frame height: window height + 4 1/2"

Semi-Inside Mount

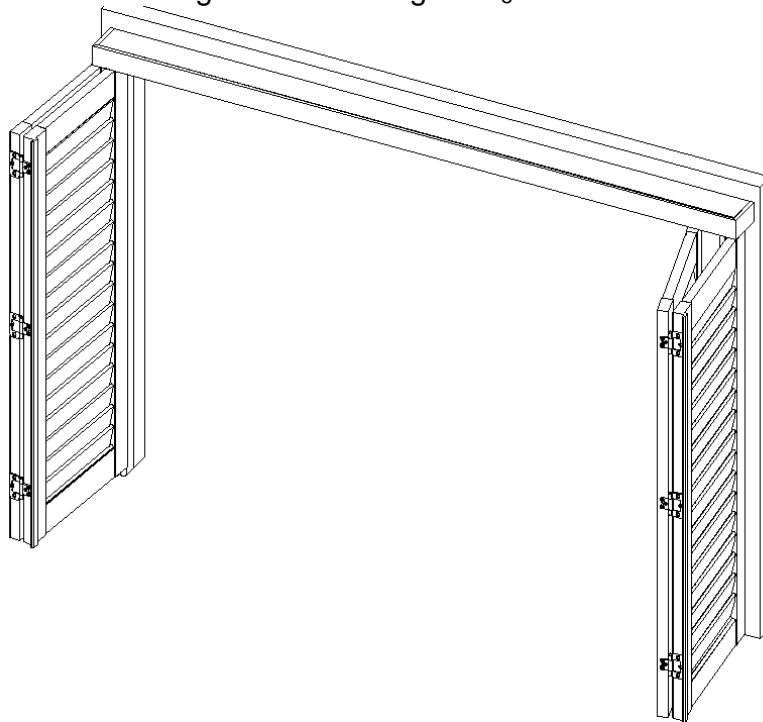
Max frame-to-frame width: window width - 1/8"

Max frame-to-frame height: window height + 1 3/8"

Inside Mount

Max frame-to-frame width: window width - 1/8"

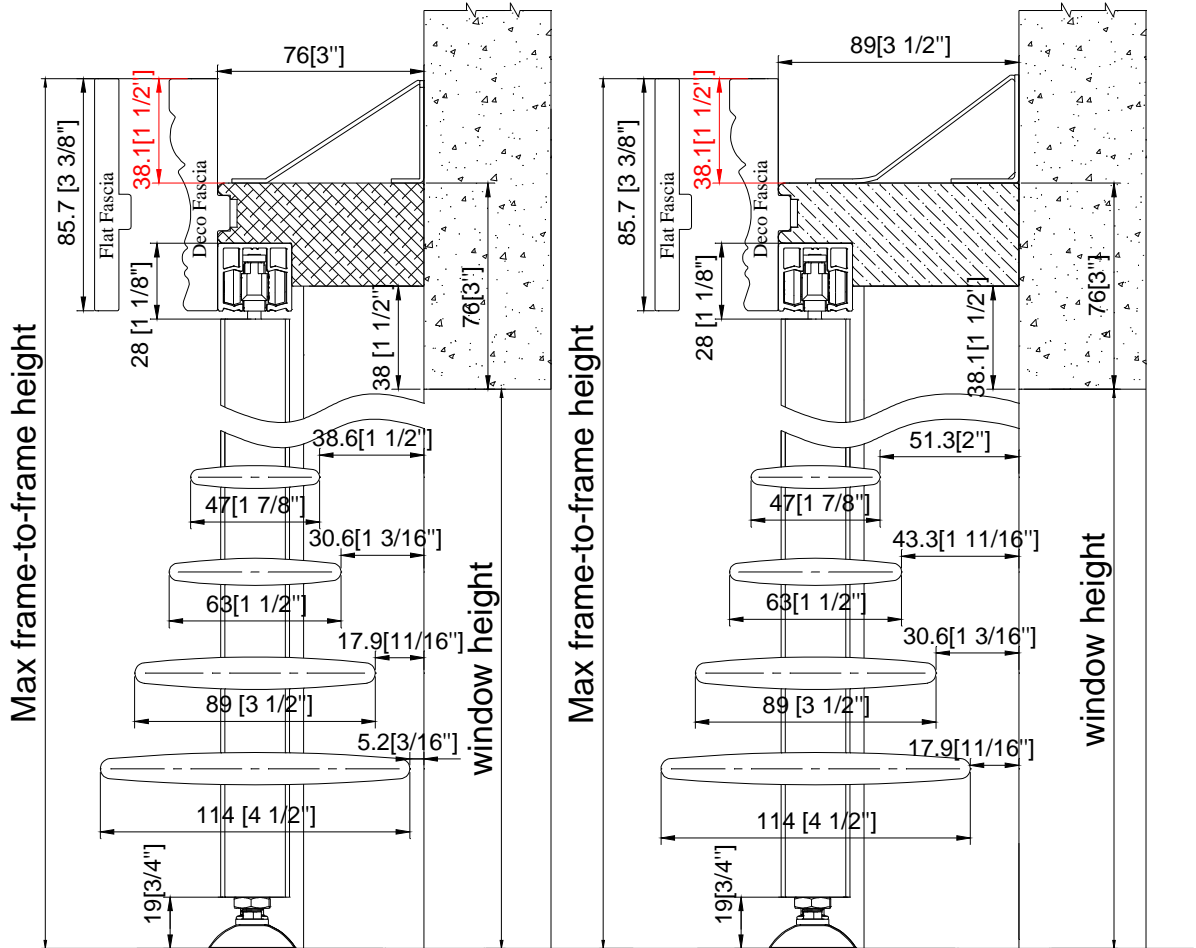
Max frame-to-frame height: window height - 1/8"



Track is pre-installed on the header; standard 1 track only.

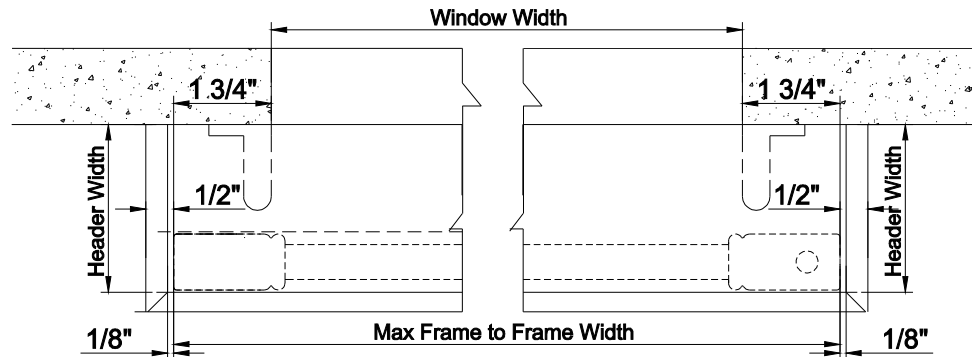
Mounting Options: Outside Mount

Side View



Top View

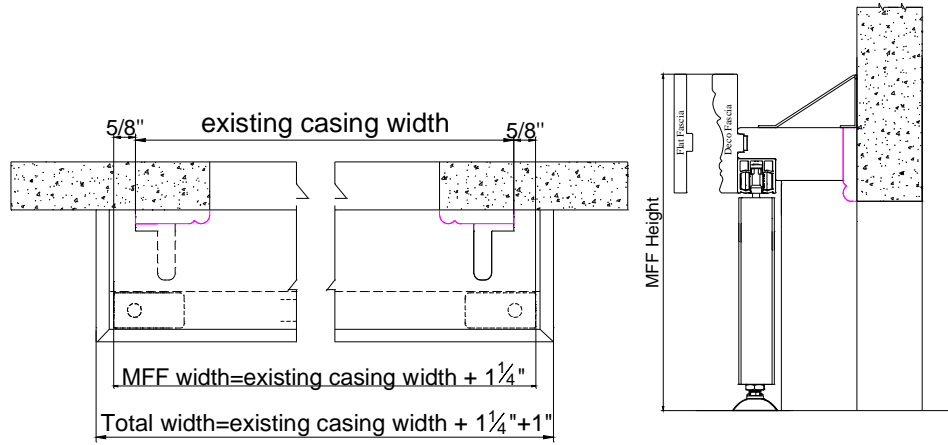
Without Casing:



Note:

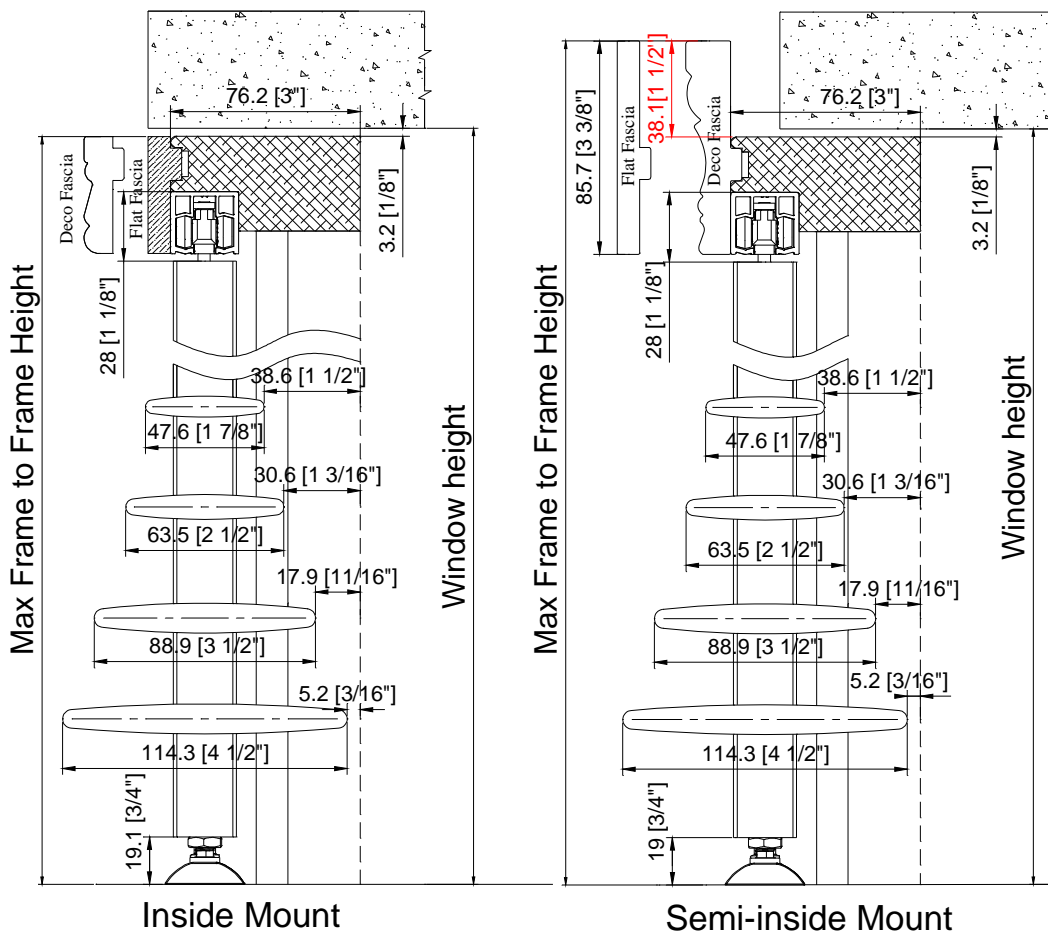
- ◇ Fascia return will protrude the panel about 1/2" for each side.
- ◇ The header will protrude the panel about 1/8" for each side.
- ◇ Header, light blocks, and bottom pivot bracket(s) must

With Existing Casing:

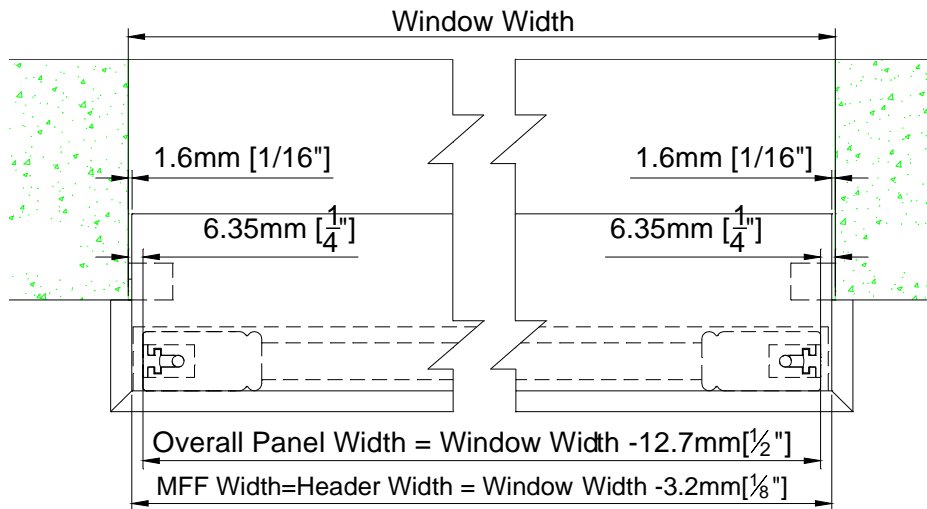


Semi-Inside/Inside Mount

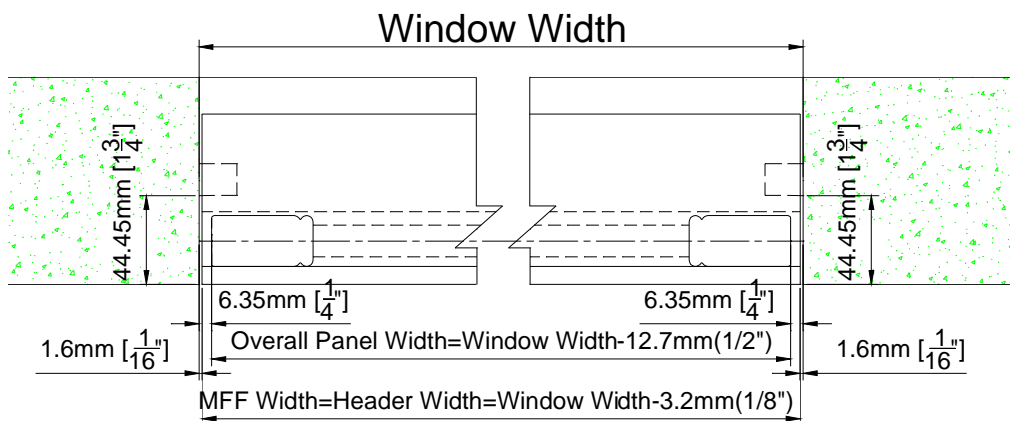
Side View



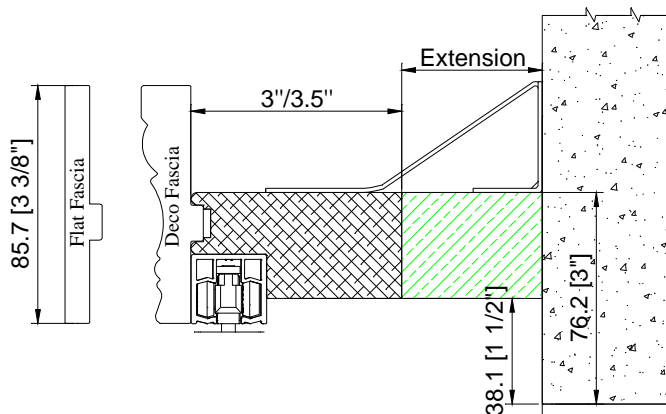
Semi-Inside Mount Top View



Inside Mount Top View



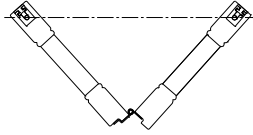
- ✧ Header Extension: Optional.
- ✧ Custom extension up to 2" for Header
- ✧ The extension will be pre-attached.



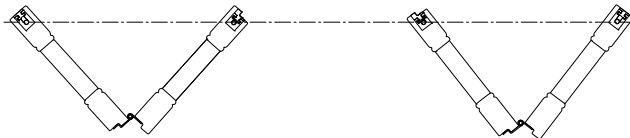
Woodlore® Shutters

Panel Configuration : Only 2", 2 1/4" rabbet and butt stiles are available. Center stile is not available.

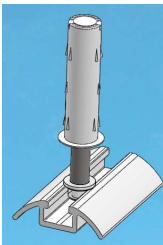
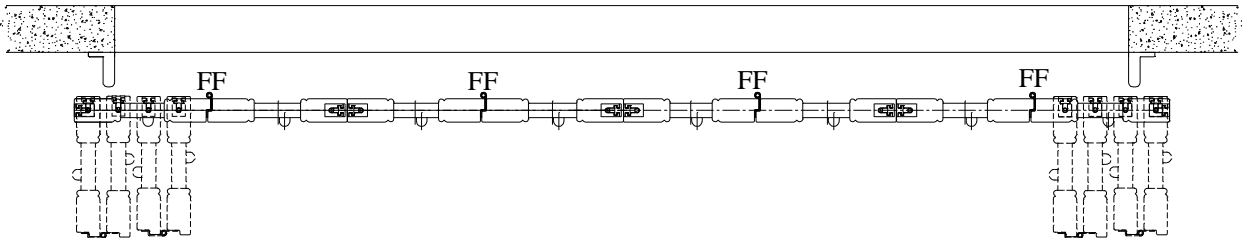
LL or RR



LLRR



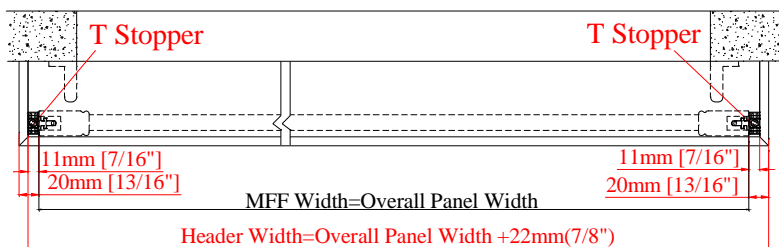
90° Floating Panels



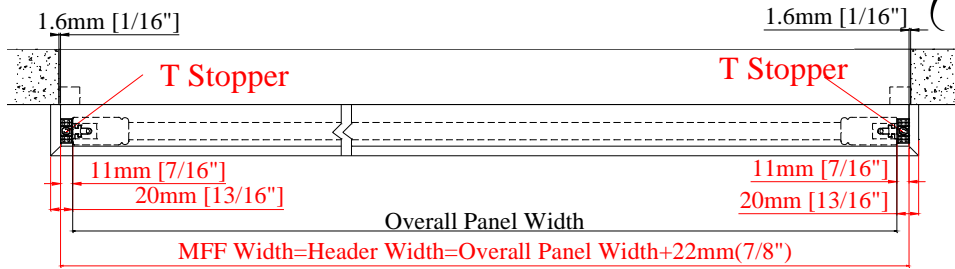
- Two or four panels can be hinged together, fold and slide to either direction
- Application comes with wheel carrier, spring loaded guide and floor track
- Can be used on large window

1. For 90° Floating Panels outside mount/semi-inside mount without sideboards, T-Stopper will be supplied and the gap between the fascia return and the panel is 11mm each side. Please see drawing below to show the gap .

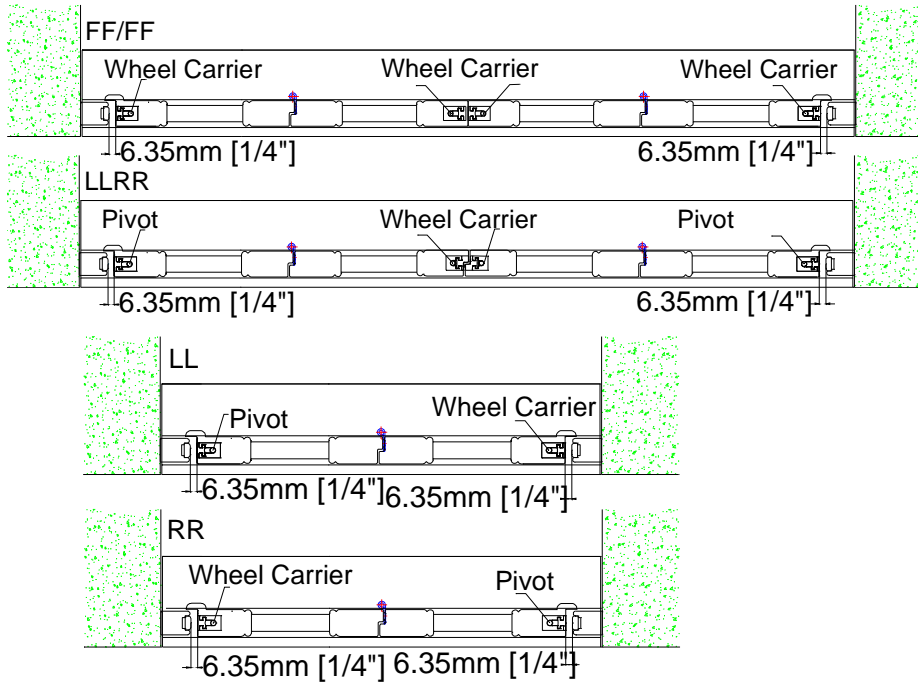
2. When rabbet stile required, the meeting stile of unhinged stile will be butt stile by default.



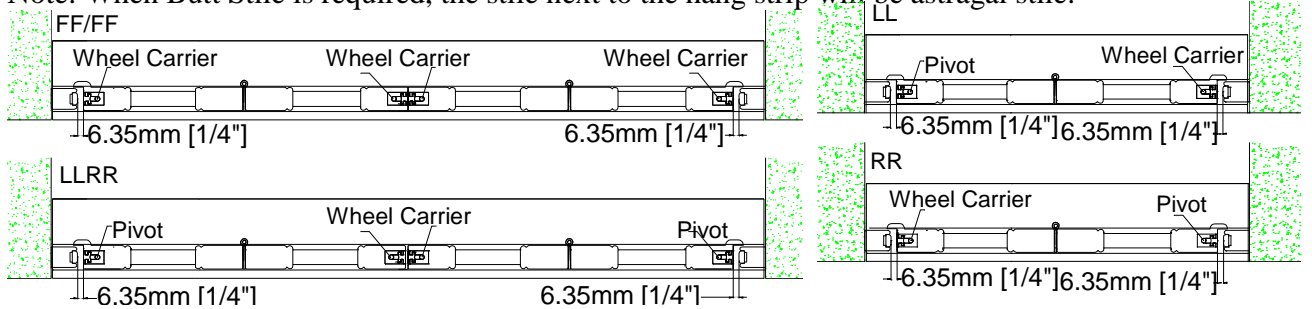
Woodlore® Shutters



Optional (Hang Strip for Inside Mount Only)



Note: When Butt Stile is required, the stile next to the hang strip will be astragal stile.

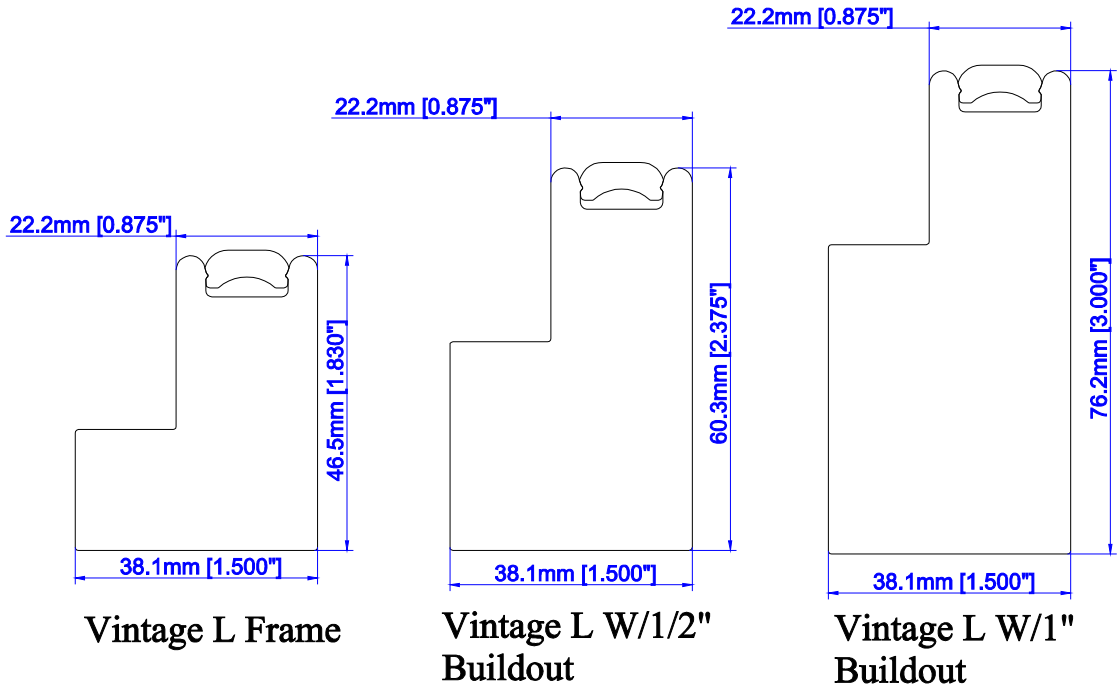


90 degree Bi Fold Track Shutters Framing Materials

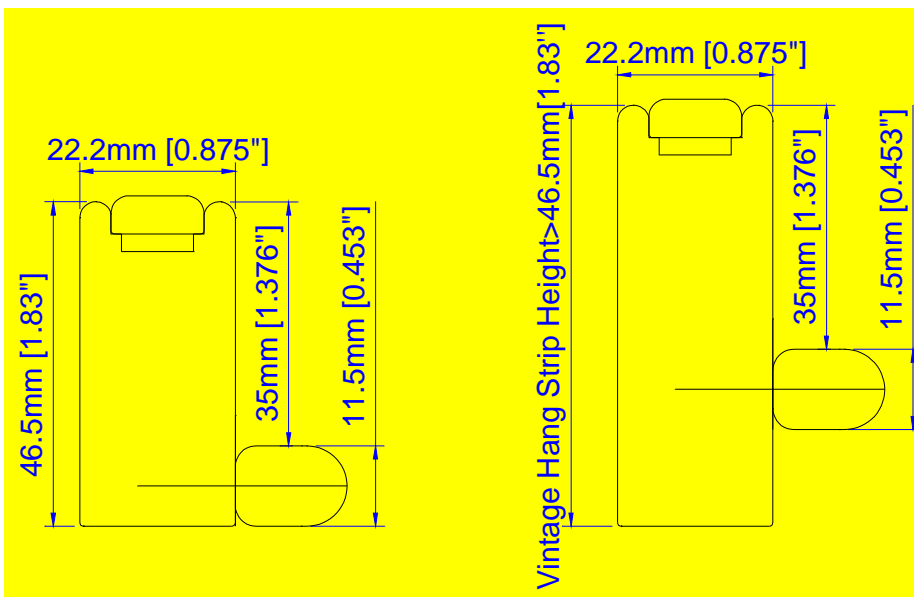
Type		Header Dimension	Top Fascia Dimension	Light Block Strip Dimension	Hang Strip Dimension
Header & Top Fascia & Light Block Strip	OM	3"	3 3/8"	1 9/16"	
		3 1/2"		2 1/16"	
	Semi-IM	3"	1 7/8"	5/8"x3/4"	
		3"		5/8"x3/4"	

Note: It will be L shape light block strip for outside mount.

Frame Hinged Bifold
Available Stile: Rabbet Stile Only
Available Frame type



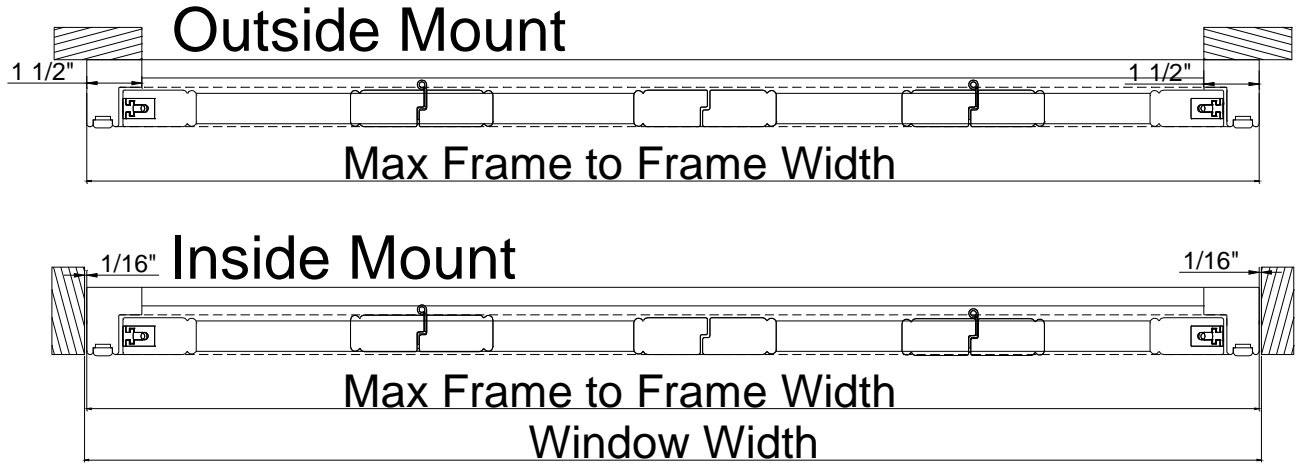
Vintage Hang Strip with 11.5mm light block: For single direction bi-fold or multi-fold shutter with even panel qty, the frame on the unhinged side will be Vintage Hang Strip with 11.5mm [0.453\"] light block, the height of the Vintage Hang Strip will match with that of the hinged side frame. The Vintage Hang Strip will be made in wood with surcharge.



Woodlore® Shutters

Top View

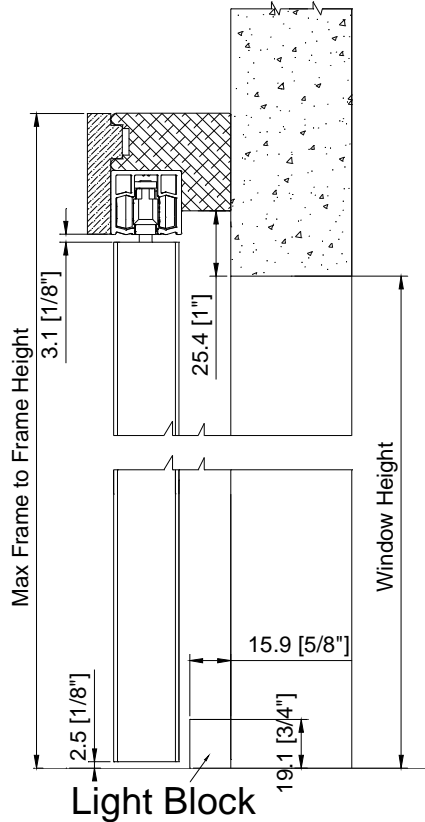
Hinged at Left or Right with wheel assembly at top;



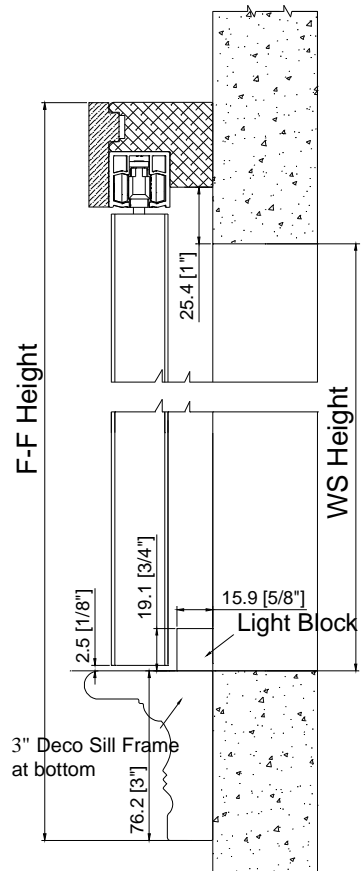
Side View

Outside Mount

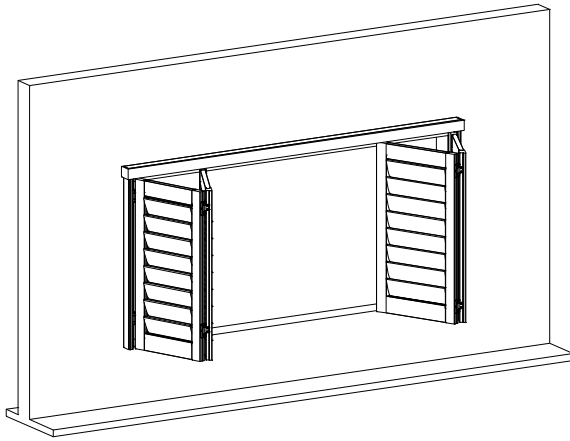
3-Sides + bottom light block



3-Sides + 3" Deco Sill Frame



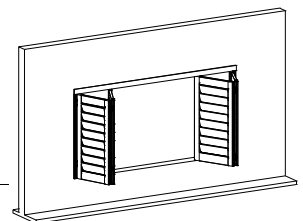
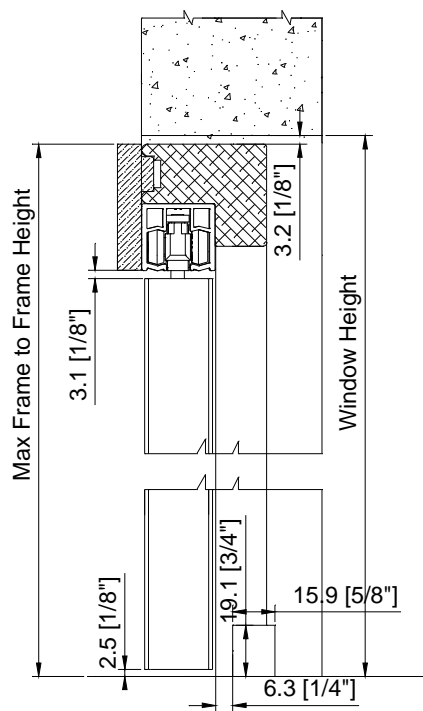
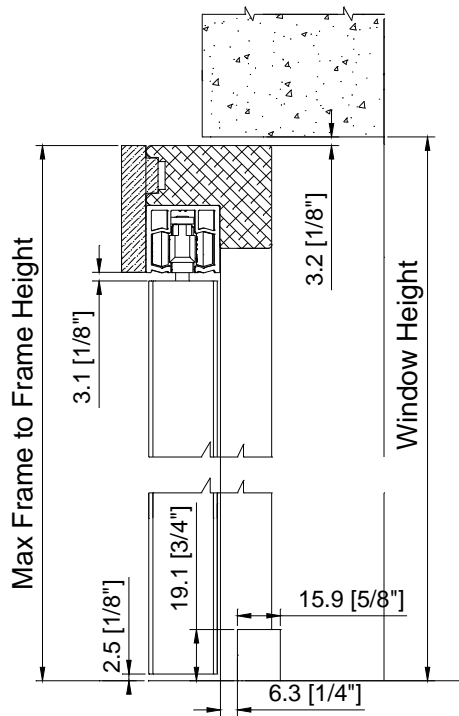
Woodlore® Shutters



Note: For OM Frame Hinged Bifold shutter not to use as a door, if there is no existing sill at the bottom of the window opening, it is recommended to have the 3" Deco Sill Frame at the bottom.

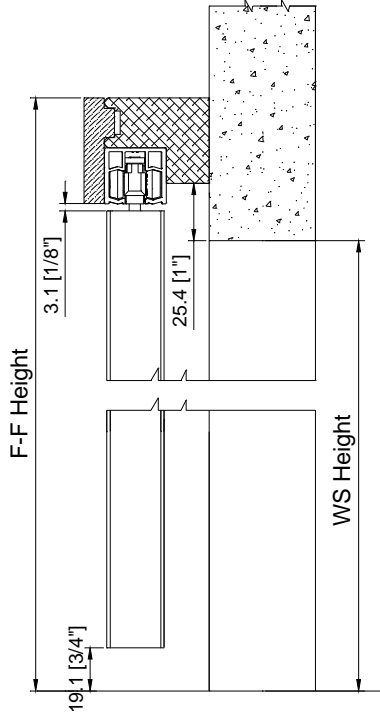
Semi-Inside

Inside Mount

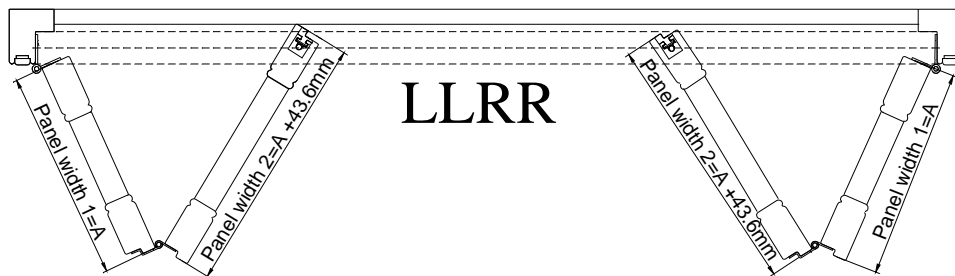
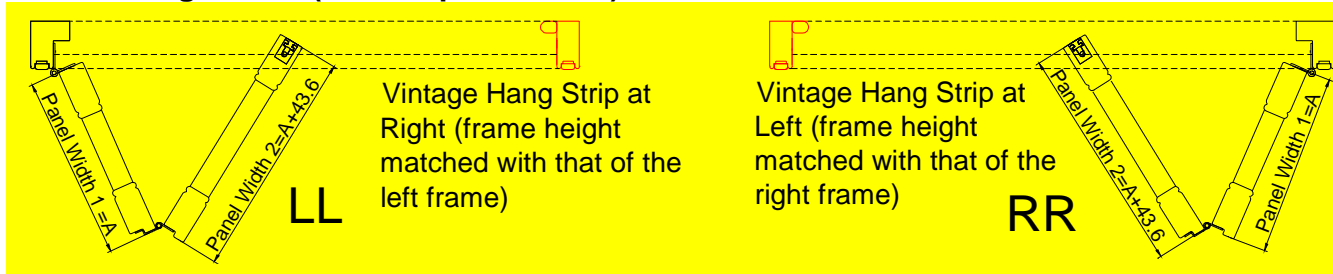


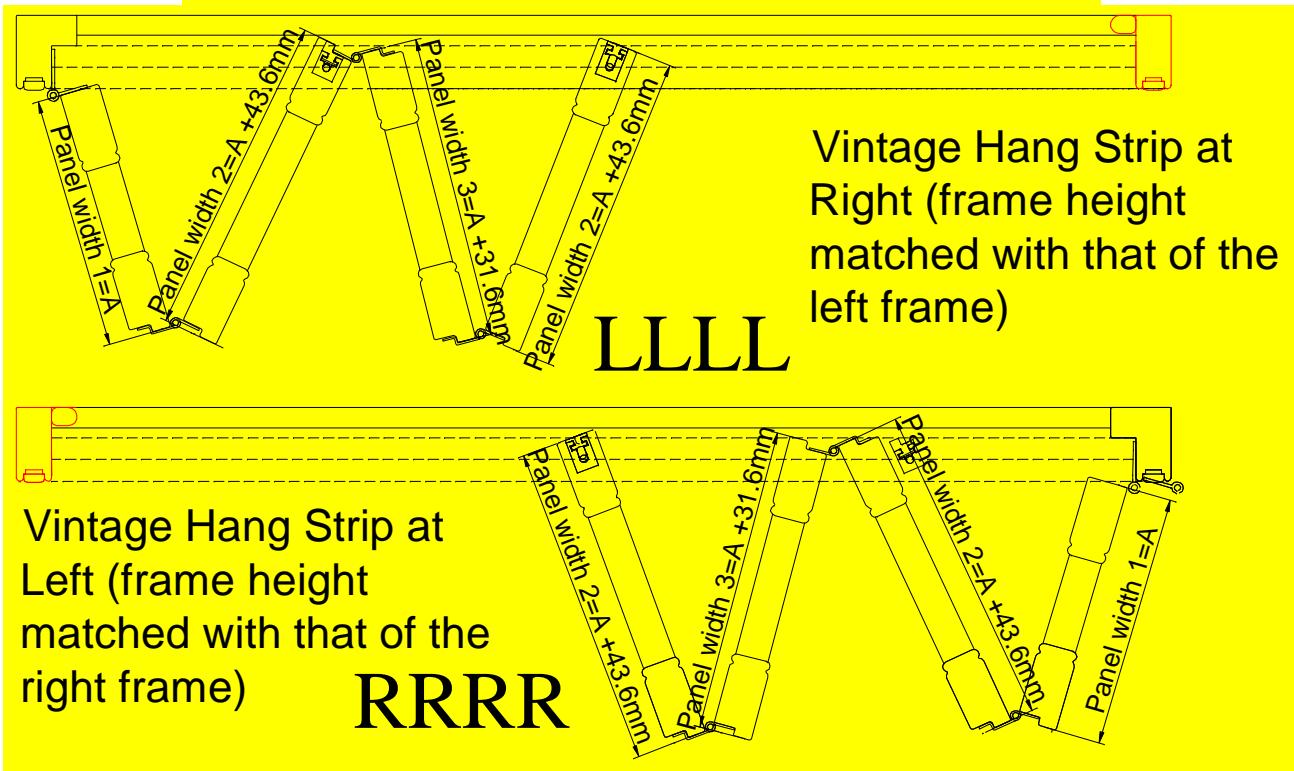
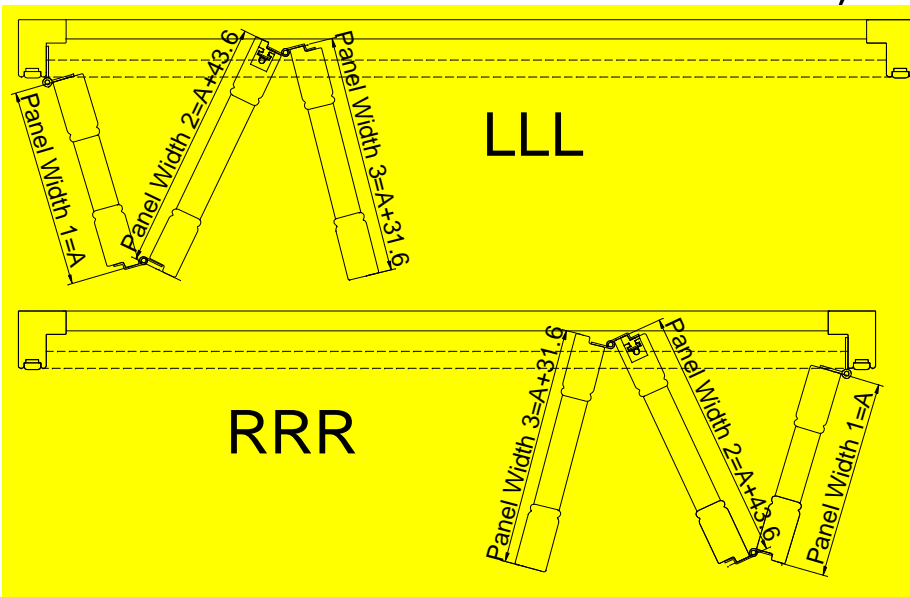
Woodlore® Shutters

For frame hinged bifold track shutter used as door, the bottom gap will be 19mm by default. Please specify "Used As Door" on the order form.

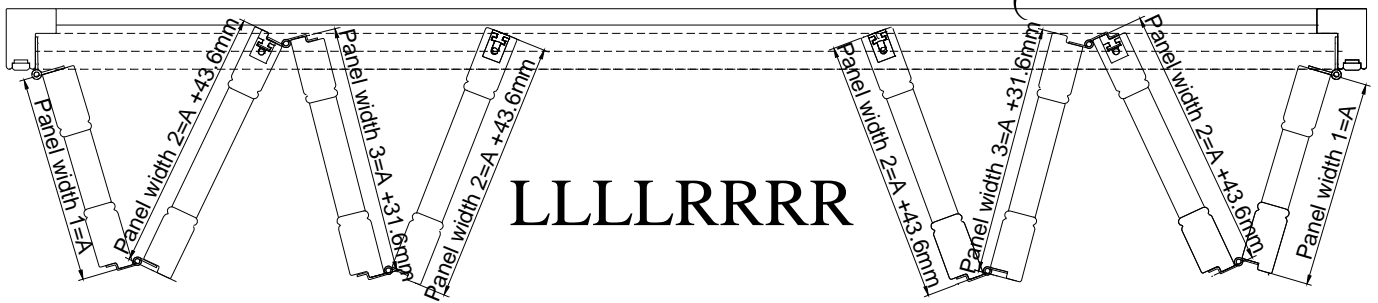


Panel Configuration (uneven panel width)



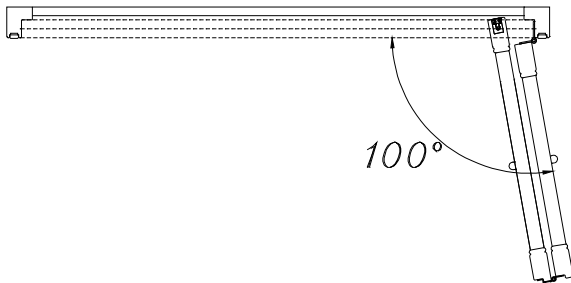


Woodlore® Shutters



Notes:

1. Only available for 3-Sides + bottom light block or 3-Sides + 3" Deco Sill Frame (4-sides is not available); Panels can be folded and open at 100 degree;

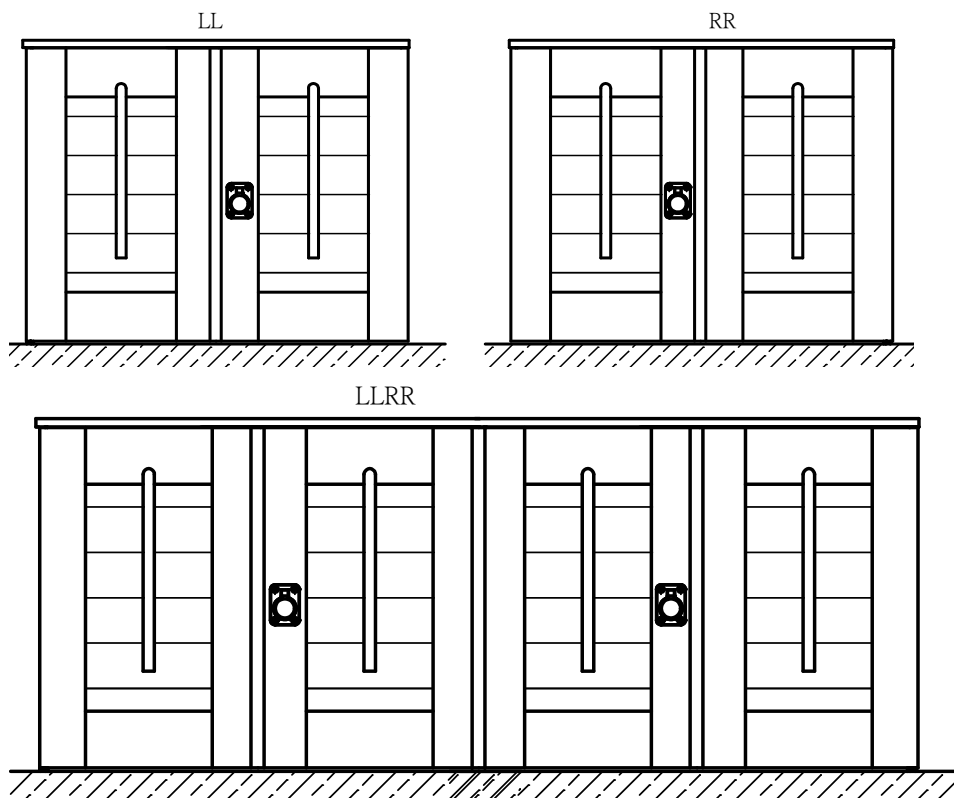


2. Frames available: Only Vintage L Frame
 - 1) For top frame, the insert will be replaced by top fascia;
 - 2) Top track will be pre-attached to the top frame;
 - 3) Frame will be pre-drilled with screw holes same as regular shutters.

Ring Pull: The ring pull will be provided as an option. Customer need specify ring pull location on the order form. Ring pull location is measured from the floor to center of the ring pull in height direction.
Ring pull color will match the hinge color.

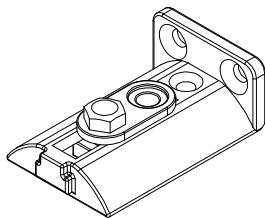
Woodlore® Shutters

Please refer to below drawing of ring pull position for all shutter type:

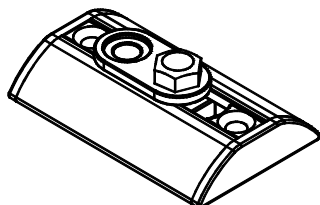


Bottom Pivot Bracket for 90 degree bifold:

For 90° Bifold Track Shutter, there will be 2 types of Bottom Pivot Brackets available.



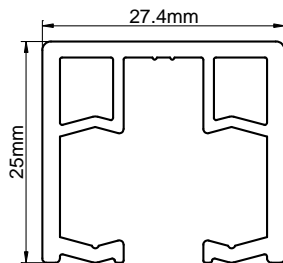
For Inside Mount, Bottom Pivot L Bracket will be supplied as default;



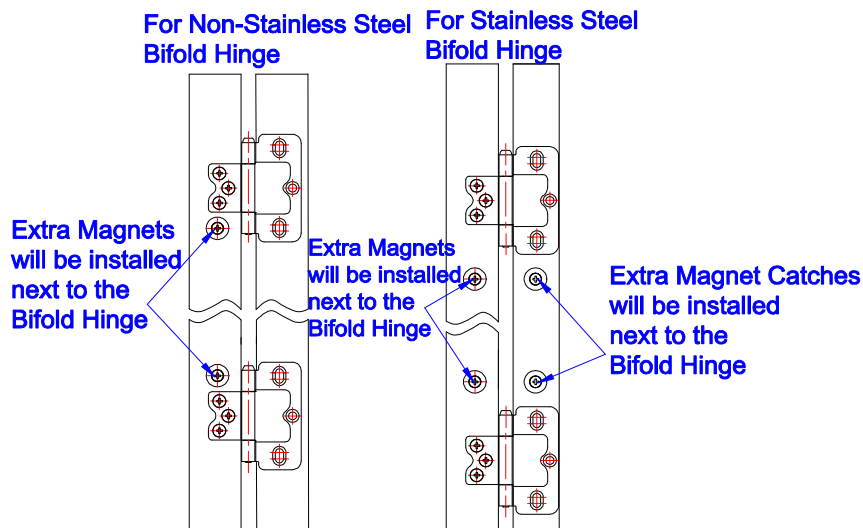
For Semi-Inside or Outside Mount, bottom pivot bracket will be supplied as default.

Track Dimension:

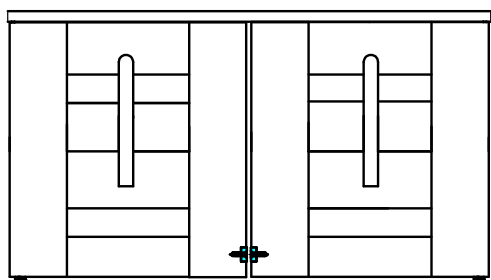
Top Track



Extra Magnets will be supplied for Bifold hinges: (only for the most top and bottom hinges)



Side Magnet: applied to the meeting stiles of LR panels



Extra magnet and Side Magnet



90° Bi Fold Track Shutters Hardware Box

Parts
Wrench
Hinge Pin
Support L Bracket (based on the length of header)
2 ½ " screws for support L bracket
¾ " screws for support L bracket
Bottom Pivot Bracket
38.1mm screws for bottom pivot bracket
63.5mm screws for Frame with predrilled screw holes

Notes:

1. for all bifold track shutter Outside Mount, the header will be pre-drilled with screw holes in the insert and screws will be supplied by default;
2. for all bifold track shutter Inside/Semi-Inside Mount, the header will be pre-drilled with holes for screws and wood plug and screws and wood plug will be supplied by default

